

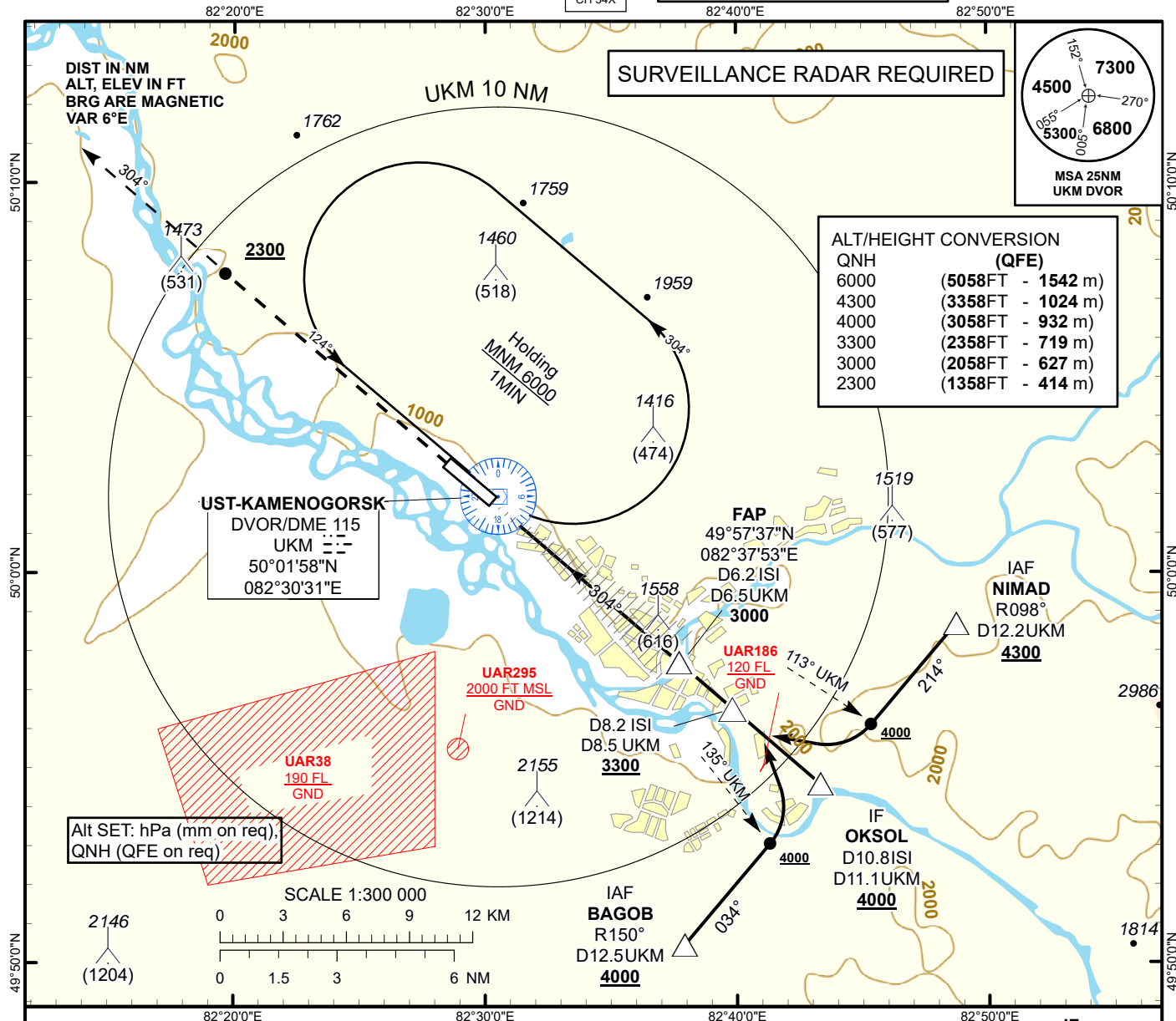
INSTRUMENT  
APPROACH  
CHART - ICAO

AERODROME ELEV **942FT**  
HEIGHTS RELATED TO  
THR RWY 30 - ELEV **942FT**

ILS  
LLZ 109.7  
ISL  
GP 333.2  
CH 34X

UST-KAMENOGORSK TOWER 130.1  
UST-KAMENOGORSK ATIS (EN) 124.2  
UST-KAMENOGORSK ATIS (RU) 127.7

UST-KAMENOGORSK  
ILS/DME  
RWY 30



**MISSED APPROACH**

Climb on track 304° to 4000 ft.  
After passing 2300 ft radar  
vectoring will be provided.

TRANSITION ALT  
**10000**

DVOR/DME  
UKM

ILS RDH 52

ELEV 942  
THR RWY 30

GP 3.0°

FAP  
D6.2 ISI  
D6.5 UKM  
**3000**

D8.2 ISI  
D8.5 UKM  
**3300**

IF  
OKSOL  
D10.8 ISI  
D11.1 UKM  
**4000**

Aircraft Category		A	B	C	D	DIST to THR DME ISI	NM	6.2	5	4	3	2	1
Straight-in Approach OCA/H						DME UKM	NM	6.5	5.1	4.1	3.1	2.1	1.1
	ILS CAT I	1142(200)	1146(204)	1156(214)	1165(224)	ALTITUDE	FT	3000	2608	2281	1957	1634	1313
						HEIGHT	FT	(2058)	(1666)	(1339)	(1015)	(692)	(371)

DME ISI ZERO RANGED TO THR RWY 30

Aerodrome Operating Minima DH ft x RVR (CMV)	ILS CAT I					WARNING							
						1.Priority landing is performed according to pattern. 2.Heavy turbulence and wind shear may arise on final.							
						GS	Kt	80	100	120	140	160	180
						Desc.Rate( 5.2%)	ft/min	420	530	640	740	850	960

UST-KAMENOGORSK  
ILS/DME

AERONAUTICAL DATA TABULATION

ILS approach to RWY30 from NIMAD, OKSOL, BAGOB	
Fix/point	Coordinates
UKM DVOR/DME	50° 01' 58.0"N 082° 30' 31.1"E
(FAP) D6.2 ISI, D6.5 UKM	49° 57' 37.1"N 082° 37' 52.8"E
OKSOL (IF) D10.8 ISI, D11.1 UKM	49° 54' 35.5"N 082° 43' 18.7"E
NIMAD (IAF) R098°, D12.2 UKM	49° 58' 42.2"N 082° 48' 43.5"E
BAGOB (IAF) R150°, D12.5 UKM	49° 50' 28.5"N 082° 37' 54.9"E
THR RWY 30	50° 01' 39.20"N 082° 30' 36.13"E
ISI LOC	50° 02' 49.8"N 082° 28' 28.4"E